



GAT MONTHLY MEMBERSHIP PROGRESS REPORT

Results as of: 1/31/2023

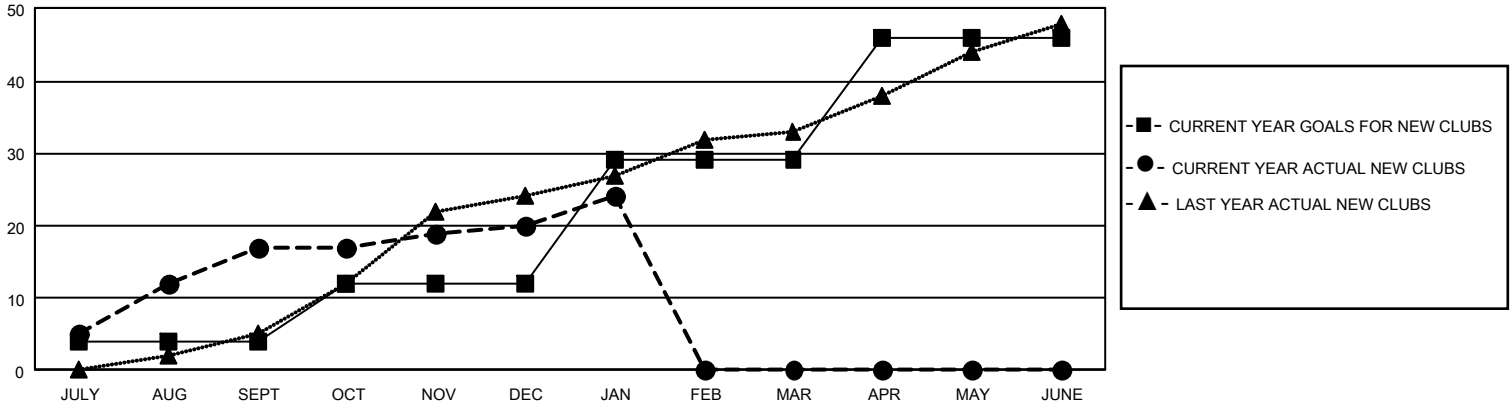
GAT Constitutional Area 7

REPORT DOES NOT INCLUDE CLUBS IN UNDISTRICTED AREAS.

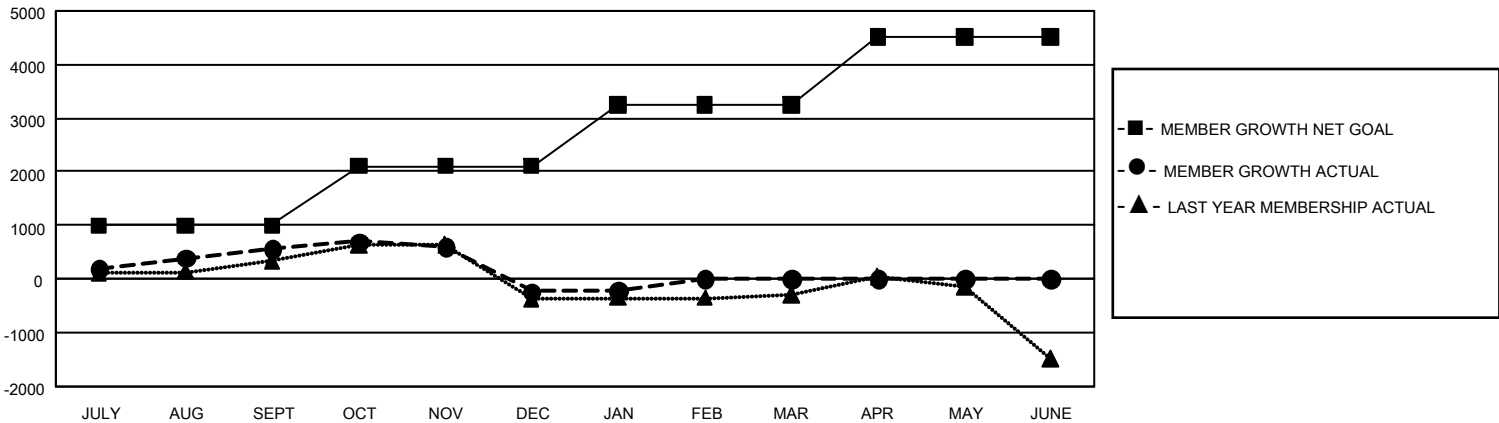
Clubs			
RESULTS FOR 2022-2023			
QUARTER	NEW CLUB GOAL	NEW CLUBS	DROPPED CLUBS
JULY/AUG/SEPT	12	17	13
OCT/NOV/DEC	24	3	15
JAN/FEB/MAR	51	4	1
APR/MAY/JUNE	51	0	0

Members			
RESULTS FOR 2022-2023			
QUARTER	MEMBER GROWTH NET GOAL	MEMBER GROWTH ACTUAL	DROPPED MEMBERS ACTUAL (including transfers)
JULY/AUG/SEPT	996	1,894	990
OCT/NOV/DEC	1105	1,218	1,881
JAN/FEB/MAR	1149	376	319
APR/MAY/JUNE	1270	0	0

GOALS AND ACTUAL NEW CLUBS CUMULATIVE



GOALS AND ACTUAL MEMBERS CUMULATIVE



DROPPED CLUBS: 29	883 CLUBS OF 1,867 ADDED 1 OR MORE NEW MEMBERS	GENDER DISTRIBUTION
DROPPED MEMBERS	CLICK HERE FOR CUMULATIVE MEMBERSHIP DATA	MALE 24,459 (58.18%)
DECEASED 316		FEMALE 17,566 (41.79%)
CLUB CANCELLED 135		NON BINARY 6 (0.01%)
OTHER 2,741		PREFER NOT TO ANSWER 8 (0.02%)
TOTAL 3,192		TOTAL FAMILY UNIT MEMBERS 7,262
		FAMILY MEMBERS PAYING HALF DUES 3,912